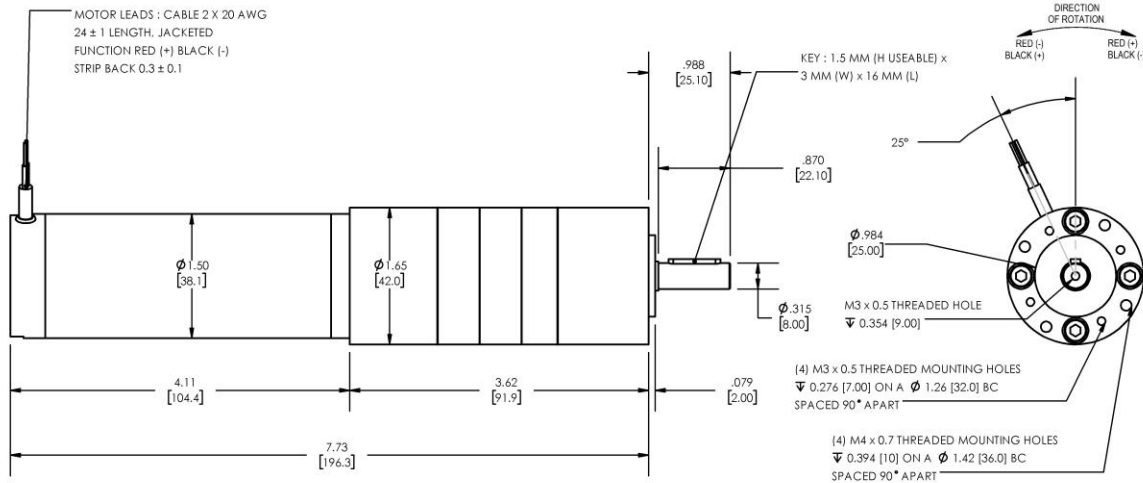


**Model Number:**  
**MMP S17-400D-12V GP42-236**



DIMENSIONS ARE INCHES [MM] UNLESS OTHERWISE STATED

PLANETARY GEARMOTOR OUTPUT PARAMETERS:	VALUE	UNITS	TOLERANCE
Gearhead Ratio (exact)	236.09 : 1		
Gearmotor Output Speed (at Cont. Torque)	8.1	RPM	+/- 15%
Gearmotor Rated Continuous Torque	215	In-Lbs	MAX
Gearmotor Peak Torque Capacity	<b>266++</b>	In-Lbs	MAX
Gearhead Standard Backlash	60	Arc Minutes	MAX
Gearhead Efficiency	70%	----	----
Output Shaft Radial Load Capacity	68	Lbs	MAX
Output Shaft Axial Load Capacity	25	Lbs	MAX
Gearmotor Total Weight	2.7	Lbs	MAX

**++ All Peak Torque values are dependent upon duty. Contact our sales office for details.**

DC MOTOR PERFORMANCE PARAMETERS:	VALUE	UNITS	TOLERANCE
Input DC Voltage	12	DC VOLTS	----
No-Load Current	0.43	AMPERES	MAX
No-Load Speed	2594	RPM	+/- 15%
Rated Continuous Torque	21	OZ-IN	MAX
Rated Continuous Current	3.9	AMPERES	MAX
Rated Speed (at Cont. Torque)	1918	RPM	+/- 15%
Rated Continuous Power Out	29	WATTS	+/- 15%
Peak Motor Torque	26	OZ-IN	MAX
Peak Motor Current	4.7	AMPERES	MAX
Back EMF Constant (Ke)	4.5	V/KRPM	+/- 10%
Torque Constant (Kt)	6.0	OZ-IN/AMP	+/- 10%
DC Armature Resistance	1.00	OHMS	+/- 15%
Armature Inductance	0.27	mH	+/- 15%
Number of Motor Poles	4	(-)	----
Armature temperature	155	DEG. C	MAX

NOTES:

- Rated speeds may drop as the motor temperature increases. Values are stated with the motor at 25 °C.
- All Peak Torque values are dependent upon duty. Contact our sales office for details.

ENCODER & BRAKE OPTIONS AVAILABLE – [FOLLOW THIS LINK FOR DETAILS](#)

NEMA MOUNTING FLANGE OPTION AVAILABLE – [FOLLOW THIS LINK FOR DETAILS](#)